



Virginia Healthcare Workforce Briefs

Indicators from the Bureau of Labor Statistics'
Current Employment Statistics Survey
Series 1: State & National Employment

Series 1, Issue 77

August 2018

Highlights

- ◆ According to preliminary estimates, Virginia's Health Care & Social Assistance (HC&SA) sector created 600 new jobs in July, which translates into a 1.7% annualized employment growth rate. In addition, this gain represents the fifth consecutive month in which employment in Virginia's HC&SA sector has increased.
- ◆ Meanwhile, Virginia's total nonfarm payroll increased for the seventh consecutive month in July thanks to a gain of 12,000 during the month. July's employment growth represents the largest one-month gain in the state's total nonfarm payroll since February.
- ◆ The consistent monthly gains in the national HC&SA sector continued in July with the addition of 33,500 new jobs. This increase is just slightly below the year-to-date average for national HC&SA employment growth. Since January, the national HC&SA sector has created an average of 35,300 jobs per month.
- ◆ After increasing by more than 200,000 in each of the previous two months, the nation's total nonfarm payroll experienced a slowdown in its growth rate in July. The nation's total nonfarm payroll increased by 157,000 in July, which represents a one-month annualized growth rate of 1.3%.

Inside this Brief:

Virginia HC&SA Employment	2
Virginia Employment	2
National Employment	3
State Employment Growth	3
About the Data	4

Data in the report are seasonally adjusted. Self-employed persons, including health professionals in private practice, are not included.

Data in Brief

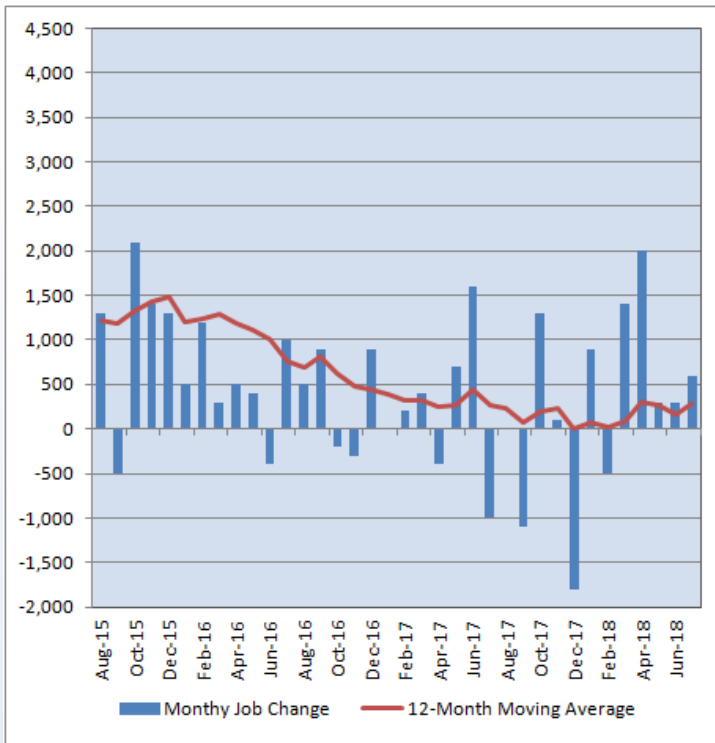
Seasonally Adjusted*	Employment, in Thousands				Growth Rate, Annualized		
	July 2017	Apr. 2018	June 2018	July 2018	12 Month	3 Month	1 Month
Nonfarm, Total							
Virginia	3,954.8	3,994.3	4,005.4	<i>4,017.4</i>	1.6%	2.3%	3.7%
National	146,728.0	148,455.0	148,971.0	149,128.0	1.6%	1.8%	1.3%
Health Care & Social Assistance							
Virginia	435.1	437.4	438.0	<i>438.6</i>	0.8%	1.1%	1.7%
National	19,564.0	19,825.1	19,898.2	19,931.7	1.9%	2.2%	2.0%
All Other Nonfarm							
Virginia	3,519.7	3,556.9	3,567.4	<i>3,578.8</i>	1.7%	2.5%	3.9%
National	127,164.0	128,629.9	129,072.8	129,196.3	1.6%	1.8%	1.2%

Preliminary estimates are italicized

*Seasonally adjusted data are adjusted by the Bureau of Labor Statistics to account for weather, holidays and other seasonal changes. Economists use seasonally adjusted data to reveal underlying trends over time. This series uses seasonally adjusted data exclusively. When comparing data in this series to other HWDC series, or publications from other sources, it is important to note whether the data reported have been seasonally adjusted.

Virginia HC&SA Employment

Figure 1: Monthly Change in Employment in Virginia’s Health Care & Social Assistance Sector, Seasonally Adjusted.



According to preliminary data released on Friday, August 17, 2018, by the U.S. Department of Labor, Bureau of Labor Statistics, Virginia’s HC&SA sector enjoyed its fifth consecutive month of positive employment growth. HC&SA employment in the state increased by 600 in July, which represents a one-month annualized growth rate of 1.7%. This month’s growth rate represents a significant improvement relative to the long-term average in Virginia’s HC&SA sector. Over the past year, HC&SA employment in the state has grown by just 0.8%.

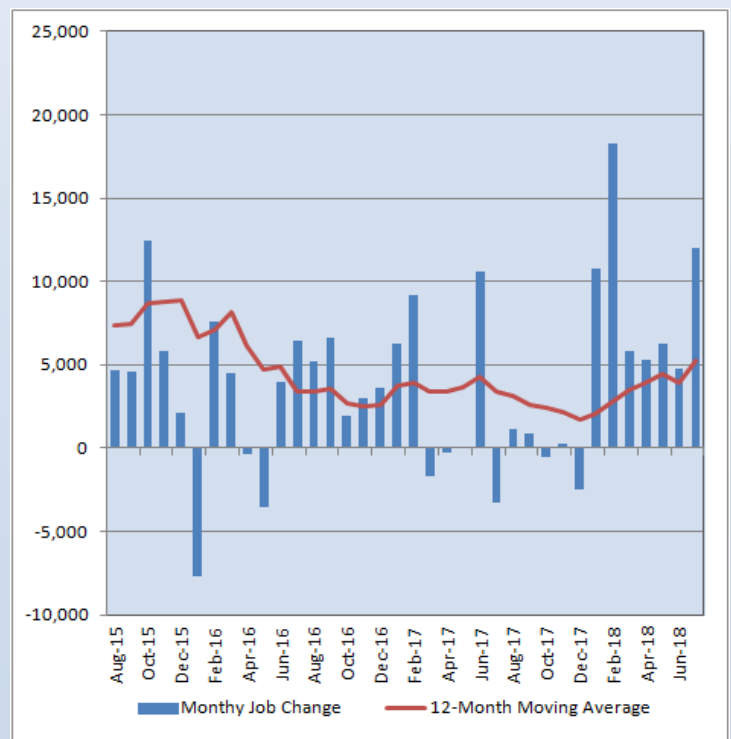
Thanks to this improvement, the 12-month moving average of the change in Virginia’s HC&SA employment nearly doubled in July. Virginia’s HC&SA sector has now created an average of 292 jobs per month over the past year. This average monthly gain represents a significant improvement relative to the levels observed at the beginning of the year when long-term employment growth was nearly nonexistent. This is thanks to the creation of 5,000 new HC&SA jobs across the state so far this year. At the same point last year, only 1,500 HC&SA jobs had been created in Virginia.

Virginia Employment

Virginia’s HC&SA employment growth was fueled by strong gains in the state’s total nonfarm payroll in July. Virginia’s total nonfarm payroll increased by 12,000 in July, a gain that represents a one-month annualized employment growth rate of 3.7%. This month’s growth rate is more than double the 12-month growth rate of Virginia’s total nonfarm payroll. In addition, July’s result also represents the largest one-month gain in Virginia’s total nonfarm payroll since February.

Thanks to this impressive gain, the 12-month moving average of the change in Virginia’s total nonfarm payroll experienced a large jump during the month. Over the past year, the state’s total nonfarm payroll has increased by an average of 5,217 jobs per month. This value has more than doubled since the beginning of the year when the 12-month moving average of the change in Virginia’s total nonfarm payroll was only at 2,058. In addition, this month’s result represents the highest value for the 12-month moving average of the change in the state’s total nonfarm payroll in more than two years. Altogether, these trends suggest an improving job market across the state.

Figure 2: Monthly Change in Employment in Virginia’s Total Non-farm Payroll, Seasonally Adjusted.

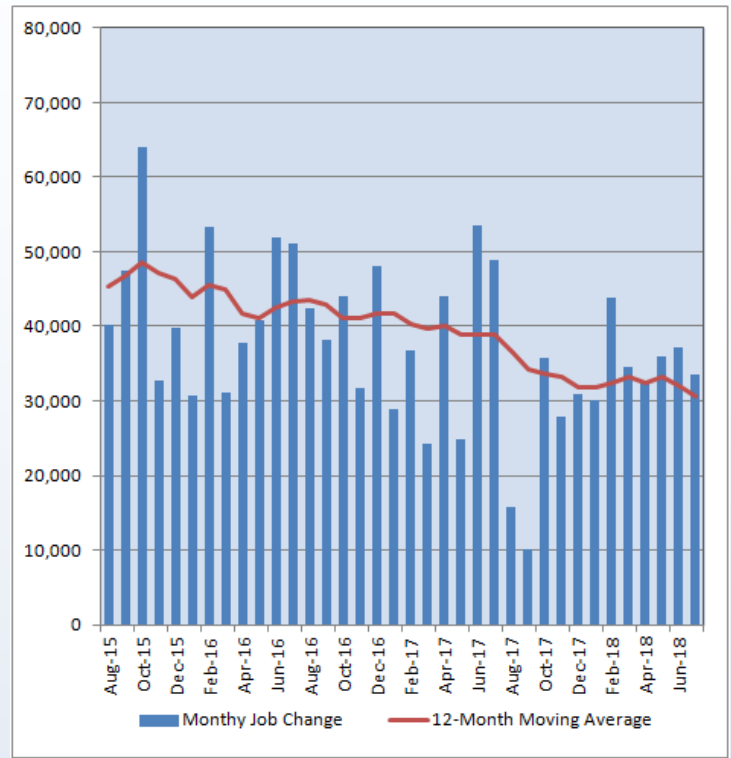


National Employment

The national HC&SA sector enjoyed yet another solid month of employment growth in June with the creation of 33,500 new jobs during the month. This gain represents a one-month annualized employment growth rate of 2.0%. Although this result is below the 2.2% annualized growth rate observed in the national HC&SA sector over the past three months, it also represents a slight improvement relative to its current 12-month employment growth rate of 1.9%. Regardless, the 12-month moving average of the change in national HC&SA employment fell once again in July to its lowest level in nearly four years. Over the past year, the national HC&SA sector has created an average of 30,642 jobs per month. One year ago, the national HC&SA sector was creating an average of more than 38,000 jobs per month.

Meanwhile, employment in the overall national economy experienced a slowdown during the month. In July, the nation's total nonfarm payroll increased by 157,000, a gain that translates into a 1.3% annualized growth rate. This result is well below the increase of 248,000 in the nation's total nonfarm payroll in June. Regardless, the nation's total nonfarm payroll has still increased by 1.5 million so far in 2018.

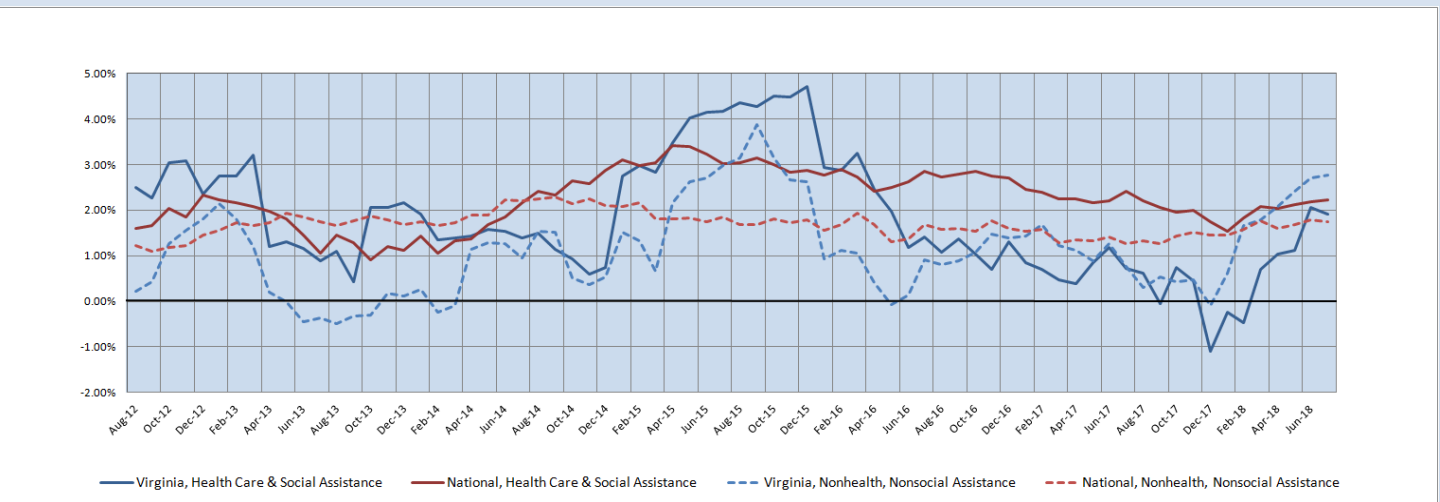
Figure 3: Monthly Change in Employment in National Health Care & Social Assistance Sector, Seasonally Adjusted



State Employment Growth

Despite a gain of 600 new HC&SA jobs in July, the six-month moving average of the employment growth rate in Virginia's HC&SA sector fell from 2.07% to 1.92% during the month. However, this decline did little to break the upward trend in the six-month moving average of the employment growth rate in Virginia's HC&SA sector that started at the beginning of 2018. Further, the six-month moving average of the growth rate in Virginia's total nonfarm payroll increased from 2.70% to 2.78% in July, thereby continuing its own upward trend since the start of the year. As for the national HC&SA sector, its six-month employment growth rate moving average edged upward from 2.18% to 2.22% in July. However, the nation's total nonfarm payroll saw its comparable moving average fall slightly from 1.78% to 1.74% during the month.

Figure 4: Six-Month Moving Average, Employment Growth, Seasonally Adjusted



Healthcare Workforce
Data Center

Perimeter Center
9960 Mayland Drive, Suite 300
Henrico, VA 23233-1463

Phone: (804) 367-2115
Fax: (804) 527-4434
E-mail: hwdc@dhp.virginia.gov

www.dhp.virginia.gov/hwdc/

HWDC Staff:

Elizabeth Carter, Ph.D. <i>Executive Director</i>	Yetty Shobo, Ph.D. <i>Deputy Director</i>
Laura Jackson <i>Operations Manager</i>	Christopher Coyle <i>Research Assistant</i>

Follow us on. . .

Tumblr: <http://vahwdc.tumblr.com/>

The Department of Health Professions Healthcare Workforce Data Center works to improve the data collection and measurement of Virginia's healthcare workforce through regular assessment of workforce supply and demand issues among the 80 professions and 350,000 practitioners licensed in Virginia by DHP.

The HWDC collects data on Virginia's licensed health professionals through surveys completed during the online license renewal and application process. Survey results and data may be accessed on our website: www.dhp.virginia.gov/hwdc/.

The HWDC also provides a series of Virginia Healthcare Workforce Briefs based on data collected by the US Department of Labor's Bureau of Labor Statistics and the US Department of Commerce' Bureau of Economic Analysis.

Virginia Healthcare Workforce Briefs:

Series 1: State & National Employment (Monthly)

Series 2: Virginia Regional Employment (Monthly)

Series 3: Income & Compensation (Quarterly)

About the Data

Data in this report are from the US Department of Labor, Bureau of Labor Statistics' Current Employment Statistics program. The CES program surveys about 143,000 businesses and government agencies monthly. Unless otherwise noted, this series uses seasonally-adjusted data that removes seasonal variations related to weather, holidays, weekends, seasons and other predictable variations. This allows us to better examine underlying trends in the labor market. Data from recent months are preliminary and subject to revision in future releases from the CES. Revisions will be reported in future editions of this series. Unless otherwise noted, the CES data presented in this series:

Includes:

- ◆ Data on employed individuals drawing a paycheck (payroll employees).
- ◆ All employees, regardless of role, occupation or hours worked.
- ◆ HC&SA employees in the private sector only.
- ◆ Persons employed by health professionals in private practice.
- ◆ Both government and private sector workers in nonfarm employment data.

Does not include:

- ◆ Self-employed workers or volunteers, including health professionals in private practice.
- ◆ HC&SA employees in the public sector. (These are counted as government workers in monthly reports).
- ◆ Information on hours worked or the quality of employment.
- ◆ Government workers in HC&SA level data. (Government workers, regardless of occupation and role, are classified as public sector employees).